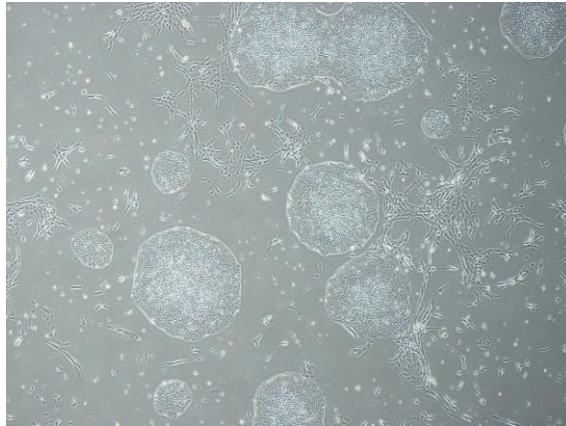


【 CiRA-j-1523 】 Morphology of iPSC colonies

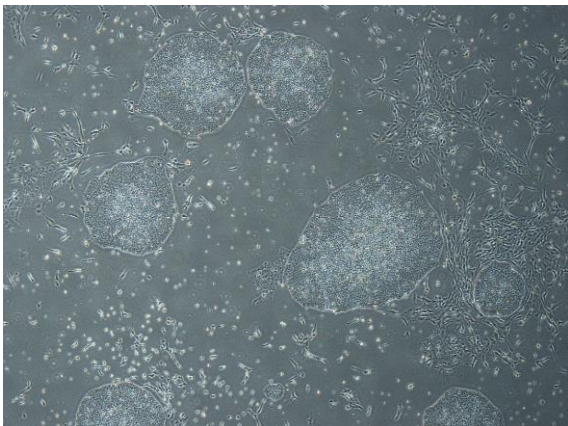
CiRA-j-1523-A: passage-3



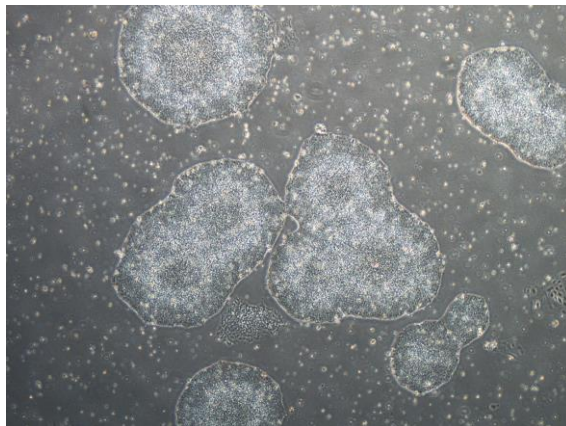
CiRA-j-1523-B: passage-3



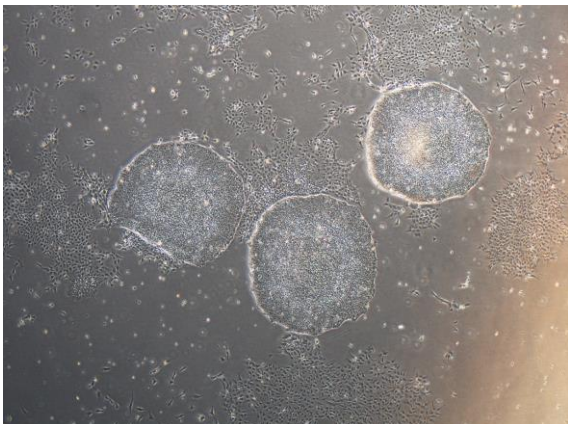
CiRA-j-1523-C: passage-3



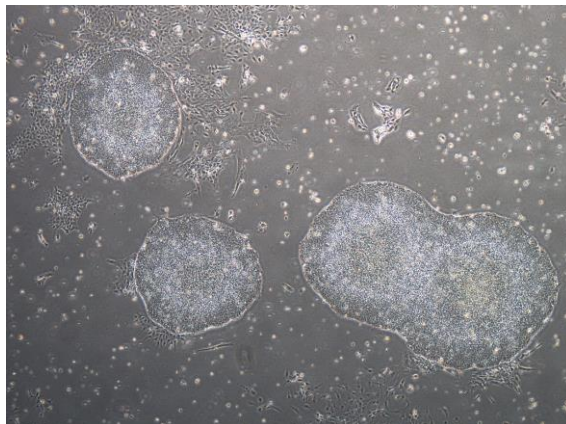
CiRA-j-1523-D: passage-3



CiRA-j-1523-E: passage-3



CiRA-j-1523-F: passage-3



(All images were captured at 4x magnification)